

General Imaging

# Mobile Ultrasound **Made Easy**

MyLab<sup>™</sup>Five



**e**saote

Whenever you need  
to make **EASY** use of a **Powerful,**  
**Compact** Ultrasound system...



**Modularity**

**Versatility**

**Compactness**

**Clinical  
Confidence**

# ...Five Reasons to choose **MyLabFive**

## **Value**

### **Clinical Confidence**

The system is equipped with the latest technologies, which are proven to meet the customers' expectations on image quality, calculations and confidence in reaching clinical diagnoses. Real-time revolutionary technologies such as TEI<sup>TM</sup>(Tissue Enhancement Imaging), XView and MView provide clear and detailed images even in difficult patients.

### **Compactness**

Belonging to the MyLab<sup>TM</sup>Family, this portable system combines the best ergonomics, attractive design and ease of use. The MyLab<sup>TM</sup>Five has a 15" high resolution color TFT LCD monitor and a keyboard designed to minimize movements of the operator's hand. Its compactness together with its ergonomic design improve the effectiveness for the ultrasound user, improving patient throughput.

### **Versatility**

The possible mobile and portable configurations of the MyLab<sup>TM</sup>Five contribute to the extreme versatility of the system. The different trolleys available with the MyLab<sup>TM</sup>Five make it suitable for various clinical environments: it is the perfect choice for private practices, hospital departments, and emergency centers. The battery integrated within the system ensures the possibility of performing an ultrasound examination at the point of care.

### **Modularity**

The MyLab<sup>TM</sup>Five is extremely flexible due to its modular and license-based architecture. It is designed for multi-application approach, and can offer a wide selection of probes. Multi-frequency convex, linear and phased array probes, as well as dedicated special purpose probes, are lightweight and ergonomically designed, allowing any clinical requirement to be met.

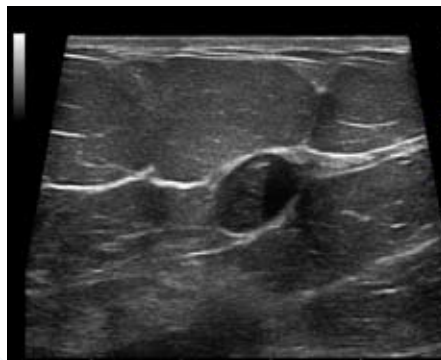
### **Value**

The easily upgradable platform allows the system to follow the technological trends, and ensures the investment value over a long-term period. Application-dedicated configurations widen the number of users, and allow a progressive investment based on clinical activities.

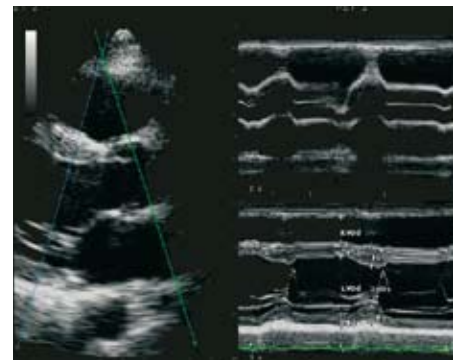
# Technologies and **Dedicated Solutions** to Meet any **Clinical Need**



**TEI™**  
Tissue Enhancement Imaging



**Xview**  
Real-time Adaptive Algorithms



**CMM**  
Compass M-Mode

# Open-platform for today's users demands

MyLab™Five meets today's growing demand for paperless data management, storage and transfer.

When selecting the final storage destination the operator can easily choose from the hard disk, DVD-burner (Optional), USB port or network storage.

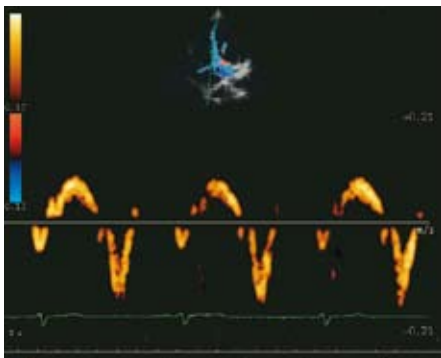
Images and clips can be stored in real-time, reviewed and exported in different formats using the embedded data management system.

Images can also be printed on video, USB or network PC printers, even using wireless solutions.

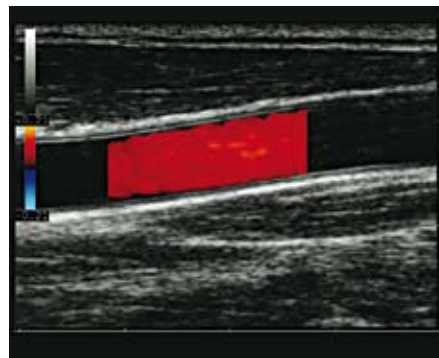


MyLabDesk

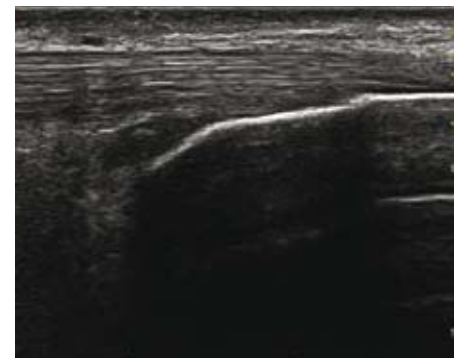
MyLab™Desk is Esaote's latest image management solution to increase workflow and productivity. MyLab™Desk is available with the MyLab™Five and can be installed on a user's standard PC, offering a comfortable reviewing, processing and reporting station. MyLab™Desk also represents a reliable solution for back-up and remote archiving.



**TVM**  
Tissue Velocity Mapping



**MView + CFM**  
Multiview and Color Doppler Imaging



**18 MHz**  
High Frequency Imaging

# Mobile solutions:

Foldable trolley



Height-adjustable trolley



Portable



Deluxe trolley



## MyLab™ Five

971544185EN02 833086000 (IMA Rev. B)



### Esaote S.p.A.

International Activities: Via di Caciolle, 15 50127 Florence, Italy, Tel. +39 055 4229 1, Fax +39 055 4229 208, international.sales@esaote.com

[www.esaote.com](http://www.esaote.com)

**FRANCE**  
Esaote France S.A.R.L.  
22, rue Pierre Grange, 94124 Fontenay-sous-Bois  
Tel. +33 1 4871 2525, Fax +33 1 4871 3630  
esaote.france@wanadoo.fr

**GERMANY**  
Esaote Biomedica Deutschland GmbH  
Max-Planck-Strabe 27a, 50858 Köln  
Tel. +49 221 9268 00 00, Fax +49 2234 9679 628  
esaote@esaote.de

**SPAIN**  
Esaote España S.A.  
Avda San Sebastian, s/n 08960 Sant Just Desvern, Barcelona  
Tel. +34 93 473 2090, Fax +34 93 473 2042  
info@esaote.es

**THE NETHERLANDS AND BELGIUM**  
Pie Medical Benelux B.V.  
P.O. Box 1132, 6201 BC Maastricht  
Tel. +31 43 3824650, Fax +31 43 3824651  
benelux@pie.nl

**UK**  
Esaote Europe BV  
UK Branch Office, 400 Thames Valley Park Drive,  
Reading, Berkshire. RG6 1PT  
Tel. +44 118 965 3500, Fax +44 709 288 0231  
ukinquiries@esaote.nl

**USA**  
Biosound Esaote Inc.  
8000 Castleway Drive,  
P.O. Box 50858, Indianapolis, IN 46250  
Tel. +1 317 813 6000, Fax +1 317 813 6600  
info@biosound.com

**BRASIL**  
Brazilian Direct Office  
Rua Tomas Carvalho, 711, 04006-001 São Paulo SP  
Tel. +55 11 2589 0533 Fax +55 11 2589 0527  
edson.lopes@esaote.com

**ARGENTINA**  
Esaote Latinoamérica S.A.  
San Martín 551, Cuerpo 'C', Piso 8, (C1004AAK) Buenos Aires  
Tel. +54 11 4326 1832, Fax: +54 11 4328 1245  
info@esaote.com.ar

**INDIA**  
Esaote Asia Pacific Diagnostic Private Limited  
F-1, Level 1, Global Arcade, Near Global Business Park  
M.G. Road, Gurgaon (Haryana)-122002  
Tel. +91 124 4775600, Fax +91 124 4775699  
info@esaote.in

**CHINA**  
Esaote China Ltd  
18/F, 135 Bonham Strand Trade Centre,  
135 Bonham Strand, Sheung Wan, Hong Kong  
Tel. +852 2545 8386, Fax +852 2543 3068  
esaote@esaotechina.com

**RUSSIAN FEDERATION AND CIS**  
Esaote S.p.A.  
18 Leningradsky prospekt, off. 5 and 6, Moscow 125040  
Tel. +7 495 232 0205, Fax +7 495 232 1833  
esaotemoscov@yandex.ru